



# HUB BOILER



# HUB BOILER

## MANUFACTURING OF

- All IBR Steam Boiler, Thermic fluid Heater, Hot Water Generator, Hot Air Generator, Wet Scrubber, Furnace Assembly, ESP, Bag Filter, Economizer, Reactor, Thermic fluid Heater Coil, APH, MDC, ID Fan / FD Fan, PA Fan.
- Supplier Of All Type Of IBR Valve, Fitting And Mounting Boiler Spares, Importer Oil / Gas Burner And Burner Spare

An innovative product for manufacture to improve the production capacity in moisture or cloudy weather.

Our product is Automated with reduce man power also its set up any where in factory location.

Our motto to develop a product of **THERMOPACK** heater is to maximize the production, reduce time & Cost, less refractories and less maintenance.

Its new innovated **THERMOPACK** Heater are manufactured with high quality materials In order to guarantee the maximum reliability and strength for long life of the product.

By optimizing the performance features and strict quality control measure implemented during manufacturing and assembly of product & its design.



## VISION

To be an exclusive company in terms of helping global modern manufacturing industries for their process efficiency by delivering most competent energy and environmental solutions.

To continually deliver excellent value & innovative construction solutions to meet our clients' requirements.

## MISSION

- To achieve our vision, we always try to retain most highest values in terms of integrity and excellence in management
- We always try to deliver world class solutions for a Sustainable, Economical and Efficient growth to our each customers.
- Our each thought in management of company supports environmental protection and enrichment of society with Best in class Energy generation equipment.
- We believe in most dependable partnership with customers and suppliers as well, to have an involvement in each other's well- being and growth.
- It's our motive to develop an organization with amicable work environment by nurturing and assisting talents of each **HUB BOILER** in terms of helping them to grow and find satisfaction with their workmanship



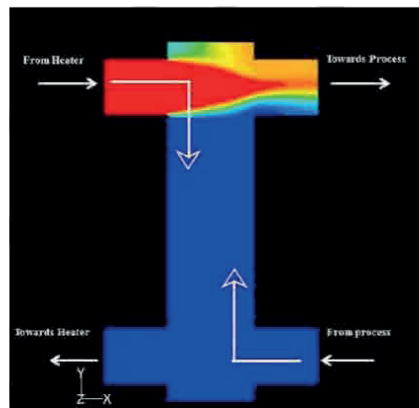
# Thermoclutch – New Technology

## Key Features

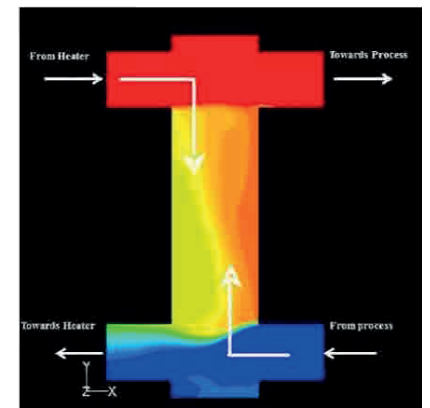
- 25% footprint reduction compared to conventional heater
- 40% fuel saving compared to conventional heater
- 50% height reduction compared to conventional heater
- 60% refractory saving compared to conventional heater
- 90% efficiency (18%) increase compared to conventional heater
- Fuel gas reticulation
- Combustor with Fuel Flexibility
- Compact Foot Print
- Boilers Automation
- Maximum uptime
- Factory Assembled Modules
- Easy Ash Remove
- Ease of Maintenance
- Soot blowing for Auto Cleaning
- Ergonomic Design
- World Class Aesthetics
- Perfect solution for your Energy Need

Different processes need different flow & temperature rise during heating, where as Thermal Oil Heaters are constant flow Constant temperature gain designs. To overcome this mismatch without changing heater designs or designing it for specific requirements, HUB BOILER introduces new updated Thermoclutch Technology.

- Primary Circuit Having TF Heater Working On Constant Flow & Temperature Difference Resulting In Better Performance & Optimized TF Pump Size
- Thermoclutch Decouples Primary Circuit And Process Side (Secondary Side) & Its Load Fluctuations. Separate TF Pumps For Secondary Circuit Which Can Be Fitted With VFD To Modulate & Offer Saving While Working As Per Load Demands/fluctuations/ On Offs.
- Flexibility Of Adding Multiple Application.
- Manual Interventions Not Required
- Lower Customization & Engg Work For High Flow System-bypass Control System Is Not Required.
- Secondary Side TF Pump Can Be Offered With VFD Helping Reduced Power Consumption



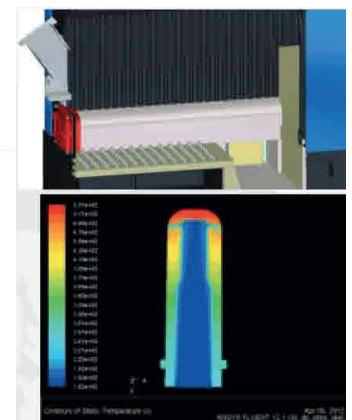
Primary Flow < Secondary Flow



Primary Flow > Secondary Flow

## NOZZAL BED

- Unique nozzle design using CFD
- Refractory baffle walls to ensure less carryover of fuel
- Turbulent combustion and high furnace volume ensure combustion efficiency





## SOLID FUEL COMBLOC BOILER

**HAP RANGE:** 1 TPH to 5 TPH

**PRESSURE:** 10.54 kg to 17.5 kg/cm<sup>2</sup>g

**TYPE:** Waterum Smock  
Tube Boiler

- Membrane Vater  
Wall Panel
- Radiant Fu Mace With Shell  
& Tube Boiler

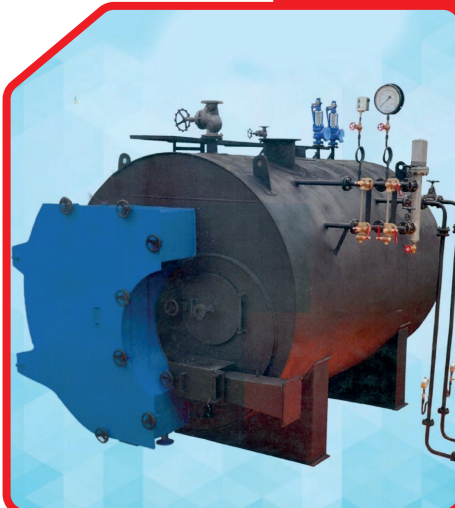
**PRESSURE:** Pneumatic Auto  
Firing

- Dumping Grote For  
Bagasse Firing
- Travelling Grate For  
Higher Capacities
- Steam Super Heating  
Provision For Fb C  
Conversion

### SALIENT FEATURES :

Ideal for Fuels with higher Volatile Content & Lighter  
Frele.g. Lights, Rice Husk, Bagdas Ground Nut Shell  
etc.

- Very High Thermalefficiency Due To Efficiert  
Combustions & Minimum Radiation Losses
- Higher Free Board Space & Large Combustion  
Volume
- Mirium Choking Hence Lower Cleaning Frequency
- Large Water Holcing & Steam Space
- Better Respor Se To Fluctuating Steam Load
- Quicker Initial Steaming
- Superior Membrane Technology In Large Bollers
- Minimum Usage Of Refractory In Fumace Harce
- Lower Maintenance Minimum Air Leakage
- Easy In Operation Maintenance Cleaning



## SMALL INDUSTRIAL BOILERS

**RANGE :** 500 kgs/Hr to 1000 kgs / Hr

**PRESSURE :** 10.54 kg to 17 kg/cm<sup>2</sup> g

**TYPE :** Shell & Tube Type, Dry / Semi Wet Back,  
Three Pass, Solid Fuel Fired

### SALIENT FEATURES :

- Suitable for Natural Draught Operation hence  
power Cost Saving
- Suitable for Bagasse, Wood, Coal & Other Agro -Waste  
Fules
- Easy in Operation & Maintenance
- Easy & Quick in Erection & Commissioning
- Lower Power Consumption
- Best (in Small Capacity) for Bagasse /  
Wood Agro Waste/Coal Firing



## SOLID FUEL FIRED THEMIC FLUID HEATER

**RANGE :** 2,00,000 Kcal/hr Up To 10,00,000 Kcal/hr  
**PRESSURE :** Up To 300 Degree Celsius  
**FUEL :** Coal, Lignite, Baggas, Wood, Husk, Saw Dust



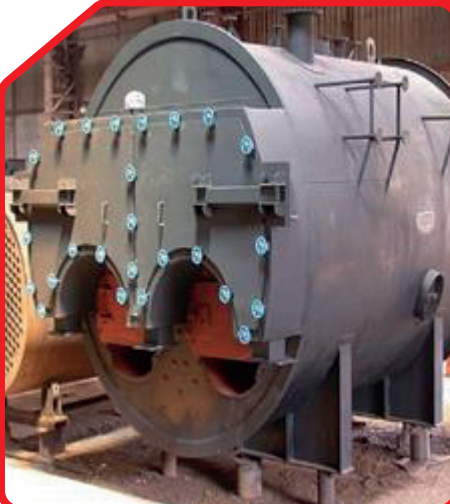
## SOLID FUEL PACKAGE STEAM BOILER

**RANGE :** 1 TPH to 6 TPH  
**PRESSURE :** 10.54 Kg to 17.5 kg/cm<sup>2</sup>  
**TYPE :** Shell & Tube Type Fully Wet Back, Three Pass Solid Fuel Fired, Smoke Tube Boiler, Dry Back  
**FUEL :** Coal, Lignite, Briquette, Husk Ground Nut Shell, Wooden Chips & Other Pulverized Fuels  
**OPTIONS :**  

- Vibratory Feeder Or Screw Feeder
- Variable Speed Drive
- Manual Firing of Wood, Coal, Lignite
- Grate Bars/Nozzles
- Over Head/Front Door Firing

**SALIENT FEATURES :**  

- Three Pass optimum heat recovery
- Large heating surface area
- Large water and steam holding capacity
- Convenient Operation & Maintenance
- Large Integral Furnace
- Factory Assembled less site work & immediate commissioning
- Easy access for Inspection and cleaning





**HUB**  
**BOILER**

HUB BOILER

## BOILER PRESSURE PART & BOILER AUXILIARIS



**THERMIC FLUID HEATER**



**COMBLOC STEAM BOILER**



**HOT WATER GENERATOR**



**HOT AIR GENERATOR**



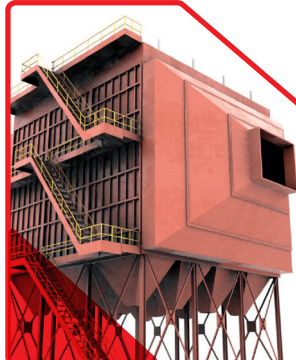
**3 PASS THERMIC  
FLUID HEATER**



**WET SCRUBBER**



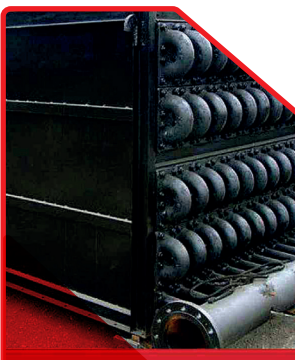
**FURNACE ASSEMBLY**



**ESP**



**BAG FILTER**



**ECONOMIZER**



**REACTOR**



**Thermic Fluid  
Heater Coil**



**HUB**  
**BOILER**

**HUB BOILER**

## **BOILER PRESSURE PART & BOILER AUXILIARIS**



**MDC**



**ID FAN / FD FAN**



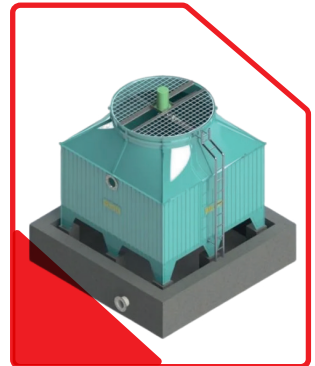
**PA FAN**



**CAST IRON GLOBE VALVE**



**BURNER AND SPARES**



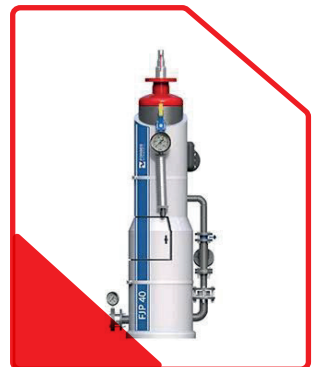
**WATER SOFTNING PLANT**



**VERTICAL FEEDS  
WATER PUMP**



**HYTHERM PUMP /  
THERMIC PUMP**



**DUPLEX PRESSURE POWERED  
PUMP PACKAGE UNIT**



**PRESSURE REDUCING  
STATION SIZE RANGES**



**FALNGE**



**ELBOW / BEND**





**HUB  
BOILER**



## **Manufacturing Unit :**

Plot No. 10, Jankalyan Nagar, Bhadar Sama Katha, Jetpur Dist.  
Rajkot (Gujarat-India)

 [hubboiler@gmail.com](mailto:hubboiler@gmail.com)

 **+91 91069 48845 | +91 99095 70237**

